

**WALK-BEHIND MANUAL SWEEPERS**

- No power required, cost effective, ideal for both indoor and outdoor use
- Suitable for hard floors, concrete, and carpets

For courtyards, paths, workshops and halls. For caretakers, tradesmen, contract cleaners and industry. Walk-behind sweepers and sweeper vacuums are ergonomic and easy to use. They sweep thoroughly with low dust development - even in corners.

**Call us today to show you what they can do for you!**



**\$1.34**  
EACH



MFGLASS

**16"X16" GLASS CLEANING MICROFIBRE CLOTH**

Mirror & Glass Microfibre Cloths are designed with premium microfiber construction that leaves no trace of scratches or lint residue behind on glass or mirrored surfaces. The quality weave and double-finished edges give the microfiber glass cleaning cloth the durability to withstand numerous launderings.

**\$50.23**  
CASE



CH-5154

**NATURAL CITRUS FOAMING ALL PURPOSE CLEANER- 12/CASE**

Removes grease, oil and dirt from most surfaces. The d-Limonene-based formula not only quickly de-greases most surfaces, but has a natural citrus fragrance. Removes adhesives and decals. SprayAnyWay valve.

19oz aerosol.  
12 per case.

**\$80.00**  
EACH



KCC-09990

**SANITOUCH MANUAL PAPER TOWEL DISPENSER - SMOKE COLOR**

A high-capacity dispenser. One-at-a time, hands free pull dispensing for controlled usage and less waste. Durable, high-impact plastic dispenser gives user a smooth and quiet operation, with no batteries needed. Use with universal hard roll towels with a 1.5" core.

**\$81.26**  
CASE

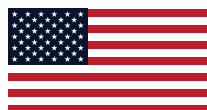


FH-KC-01005

**01005 SCOTT 8" WHITE ROLL TOWELS, 1000' ROLL - 6/CASE**

High-capacity commercial paper towels compatible with most universal roll towel dispensers. Designed to reduce maintenance time, run-outs and complaints. For efficient general-purpose cleaning and drying. Meets EPA standards; FSC[R] and EcoLogo[R] certified.

Use in KCC-09990 towel dispenser.  
1000' per roll - 6 rolls/case.



B-26001200

**BETCO ENVIROZYME  
DRAIN & TRAP TREATMENT  
(DT7) - 32OZ, 12/CASE**

Contains a blend of probiotics that degrade grease and short and long-chain fatty acids that are the root cause in clogging drain lines and grease traps. 700 Billion CFU per gallon. 3.5 times the industry standard CFU per gallon. Neutral formula that doesn't contain caustics or acids; safer for the end user. Can be applied manually or using a Betco[R] automatic dosing system. Won't damage the pipes or traps. EnviroZyme[R] Probiotic Solutions; Green Earth[R]; NSF[R] Certified.

**\$50.<sup>59</sup>**  
CASE



CLO-70427

**GLAD FORCEFLEX  
WHITE TRASH BAGS  
24"X28" WITH  
DRAWSTRING, 100/CASE**

Trap, lock and neutralize odors to keep your rooms smelling fresh with OdorShield. Dual-layer protection is designed to give extra flex as it expands around sharp edges and heavy loads. Resists punctures, rips and tears. Durable 3-ply drawstring design grips the can so the garbage bag stays in place. Drawstring makes it easy to close and easy to carry out the trash, with no fear of leaks or tears.

13 gallon.

**\$28.<sup>45</sup>**  
CASE



G7470

**7548 48OZ PRO PUMP-UP  
ONE-HAND SPRAYER  
- VITON SEALS**

The Impact 7548 48oz Pro Pump-Up One-Hand Sprayer is a portable, handheld pressure sprayer designed for applying chemicals, cleaners, and degreasers. It features durable Viton seals for increased chemical resistance, making it suitable for a variety of cleaning tasks.

**\$31.<sup>62</sup>**  
EACH



A7000

**19733 METAL POLE FLOOR STAND  
FOR DISPENSING UNIT  
- WHITE**

Made in North America from High-Quality Steel. Includes base, pole, mounting plate & hardware. Attach dispenser to plate, for eg hand sanitizer.

Powder-coated white.

Easily secured to ground with bolt-holes in the base plate.

For use indoors & outdoors.

**\$70.<sup>00</sup>**  
EACH



**SERVICE & REPAIRS**

**WE SPECIALIZE IN SERVICING A WIDE RANGE OF EQUIPMENT, INCLUDING:**

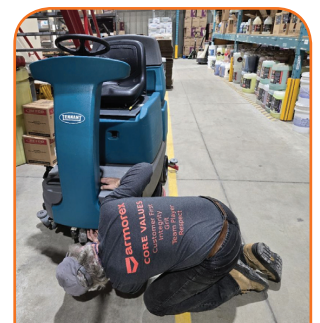
Vacuums, Upright Cleaners, Wet/Dry Vacuums, Carpet Extractors, Automatic Floor Scrubbers, Burnishers, Single & Dual-Speed Floor Machines, Sweepers, Air Movers, Commercial Dishwashers.



**CHOOSE FROM OUR FLEXIBLE SERVICE OPTIONS:**

**On-site Servicing:** Our skilled technicians can handle repairs and maintenance right at your location, minimizing downtime and disruption to your operations.

**Warehouse Service:** For more extensive repairs or maintenance, we offer the convenience of bringing your equipment to our state-of-the-art warehouse in London. Our dedicated team will ensure prompt and thorough service.



**Confidence in Clean.  
Strength in Safety.™**



[armorex.com](http://armorex.com)

1.888.229.6500

[customerservice.us@armorex.com](mailto:customerservice.us@armorex.com)

7109 Dan McGuire Dr. Brighton MI 48116

